

# ANT Series

Innovative, High quality, Best price



## ANT-HP5526N

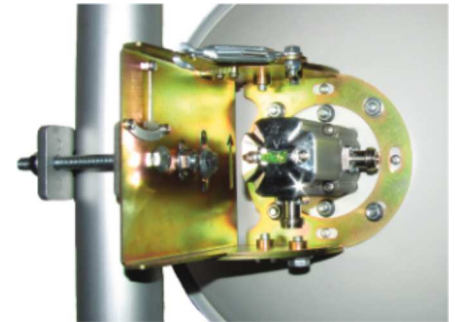
Dual Polarity High Performance Dish  
4.8 - 6.1 GHz, 26 dBi

### Features:

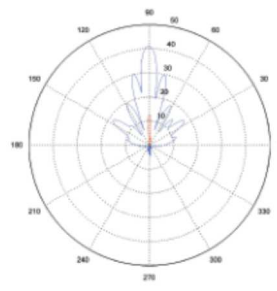
- Wide Band Operation
- Vertically and Horizontally Polarized
- Best Solution for **Noisy** Environments

### Electrical Specification

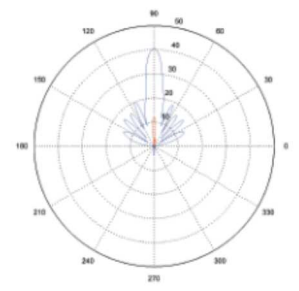
Frequency Range:	4800 - 6100 MHz
Gain:	26 dBi(typ)
3dB Beamwidth:	7.5°(typ)
VSWR:	1.4:1(typ)
Impedance:	50 Ohms
Input Power:	25 W
Connector:	2 x N-Female
Sidelobes:	ETSI EN 302.326-3 DN1-DN5
Front to Back Ratio:	-37 dB
Cross Polarization:	-25 dB (max), -30 (typ)
Port to Port Isolation:	-32 dB (max), -45 (typ)



5.5 Ghz E-Plane and H of E-plane



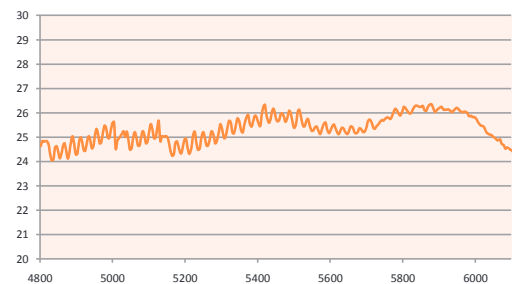
5.5 Ghz H-Plane and E of H-plane



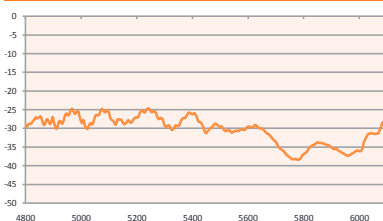
### Mechanical Specification

Size/Diameter:	480 mm
Weight(incl. bracket):	3.8 Kg
Wind Loading(Operating):	140 Km/h
Wind Loading(Survival):	220Km/h
Operating Temperature:	-50°C to 70°C
Mounting Kit/Style:	Included/Pole Mount
Pole Diameter:	25-60 mm
Additional Features:	Accurate Pan & Tilt alignment

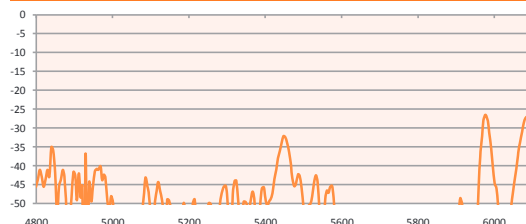
Antenna Gain 4800-6100 MHz



Antenna Cross Polarity 4800-6100 MHz



Antenna Port to Port Isolation 4800-6100 MHz



Antenna VSWR 4800-6100 MHz

